

RANDALL SCHOOL

65 I ST SW, WASHINGTON, DC

PLANNED UNIT DEVELOPMENT
SUBMISSION - REVISED

FEBRUARY 24, 2014



OWNER/DEVELOPER
TR SW 2 LLC

DESIGN ARCHITECT
Bing Thom Architects Inc.

ARCHITECT OF RECORD
Beyer Blinder Belle Architects & Planners LLP

LANDSCAPE ARCHITECT
Oehme, van Sweden & Assoc. Inc.

LAND USE ATTORNEY
Holland & Knight LLP

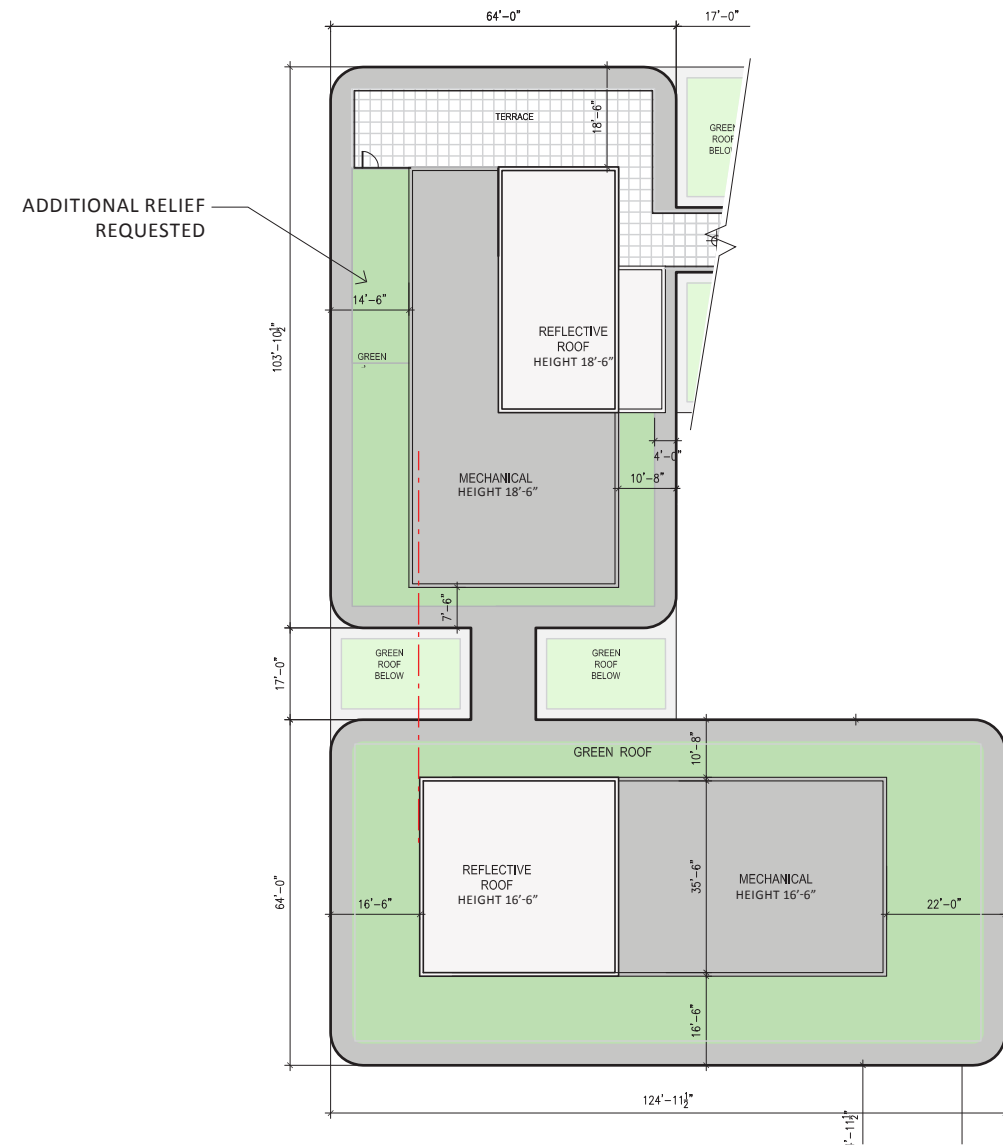
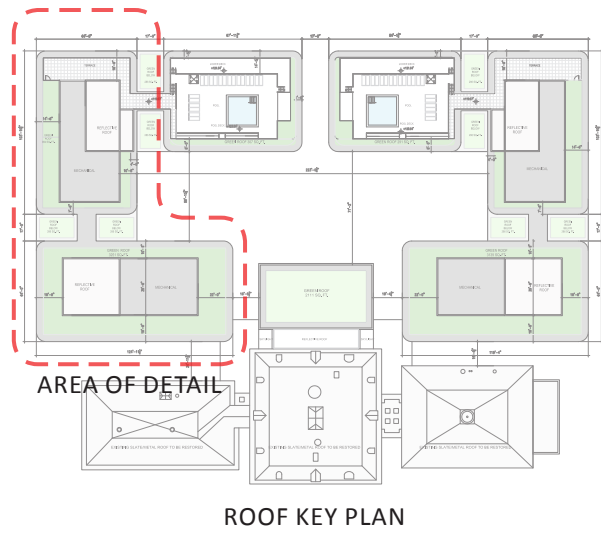
CIVIL ENGINEER
Wiles Mensch Corporation

TRAFFIC CONSULTANT
Gorove Slade Associates Inc.

HISTORIC CONSULTANT
EHT Traceries Inc.

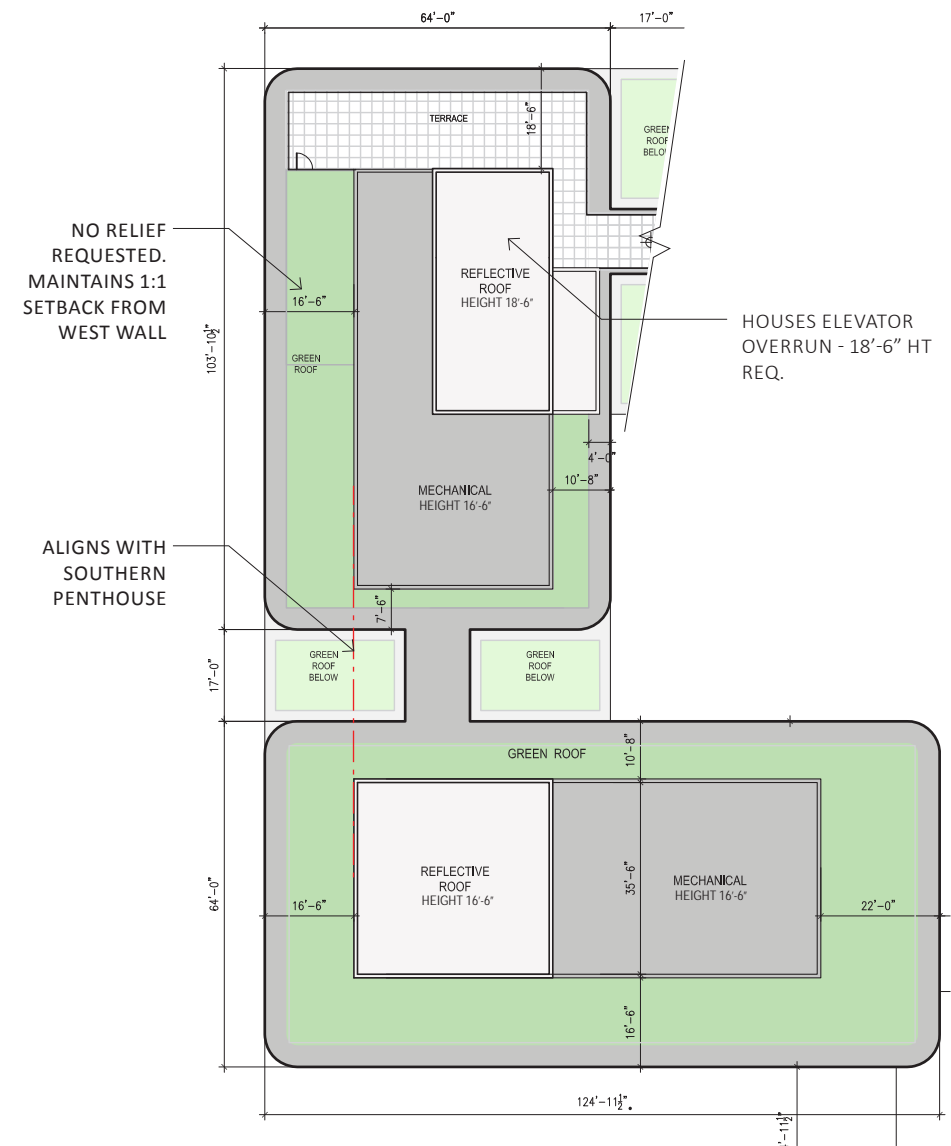
**Beyer
Blinder
Belle**

Architects & Planners LLP



PENTHOUSE PLAN
SUBMITTED JAN 10, 2014

16'-6" SOUTH PENTHOUSE HEIGHT
18'-6" NORTH PENTHOUSE HEIGHT
18'-6" AT ELEVATOR PENTHOUSE
DOES NOT MAINTAIN 1:1 SETBACK FROM WEST WALL



REVISED PENTHOUSE PLAN

16'-6" SOUTH PENTHOUSE HEIGHT
16'-6" NORTH PENTHOUSE HEIGHT
18'-6" AT ELEVATOR PENTHOUSE ONLY
MAINTAINS 1:1 SETBACK FROM WEST WALL

PENTHOUSE STUDIES



WEST ELEVATION - SUBMITTED JAN 10, 2014



REVISED WEST ELEVATION

PENTHOUSE STUDIES



SOUTH ELEVATION - SUBMITTED JAN 10, 2014



REVISED - SOUTH ELEVATION

PENTHOUSE STUDIES